



# RACE PROGRAM

2014 | 2015



# RACE PROGRAM

## 2014 | 2015



## DYNASTAR LANGE KERMA POC

### SZANOWNI PAŃSTWO

Zapraszamy do zapoznania się z ofertą RACING na sprzęt i akcesoria marki DYNASTAR oraz LANGE. Nasza oferta skierowana jest do klubów, zawodników i szkół narciarskich, które nastawione są na szkolenia sportowe i tym samym wymagają najlepszego sprzętu dla użytkowników.

### CENNIKI

W załączonej ofercie znajdziecie Państwo:

- CENY RACE PREORDER DLA SKŁADAJĄCYCH ZAMÓWIENIA PRZEDSEZONOWE (WAŻNE DO 28.03.2014)
- CENY RACE DLA SKŁADAJĄCYCH ZAMÓWIENIA/DOMÓWIENIA W SEZONIE 2014/2015 (WAŻNE PO 28.03.2014)
- SUGEROWANE CENY DETALICZNE W SEZONIE 2014/2015

### PROMOCJA (dotyczy wyłącznie zamówień przedsezonowych - złożonych do dnia 28.03.2014)

#### • BUTY DLA ZAWODNIKA:

Przy zamówieniu dwóch par nart i więcej dla zawodnika istnieje możliwość zakupu butów narciarskich z 50% rabatem od sugerowanej ceny detalicznej. Promocja będzie honorowana na podstawie imiennej listy zawodników przedstawionej w terminie składania zamówień przedsezonowych.

#### • GRATISY DLA KLUBU:

Klub otrzyma gratisy o równowartości 7 % złożonego zamówienia. Promocja będzie honorowana po pod warunkiem odbioru całego zamówienia i pełnym jego rozliczeniu. Wyboru nagród można dokonać na bazie bieżącej oferty PM SPORT, aż do wyczerpania zapasów. Budżet nagród realizowany jest w sugerowanych cenach detalicznych.

#### • OFERTA DLA TRENERÓW I INSTRUKTORÓW SITN:

Zamówienia imienne „preorder” składane do 28.03.2014r. przez trenerów grup sportowych, prowadzących szkolenie w ramach klubu, oraz zamówienia aktywnych instruktorów, zatrudnionych w licencjonowanych szkołach narciarskich SITN będą realizowane w cenach race preorder z dodatkowym rabatem 20 %. Warunkiem skorzystania z oferty jest złożenie zamówienia do 28.03.2014r. oraz pozytywna weryfikacja, poświadczenie przez Klub lub przez licencjonowaną szkołę narciarską zrzeszoną w SITN

## TERMINY, ZAMÓWIENIA

**TERMIN SKŁADANIA ZAMÓWIEŃ PRZEDSEZONOWYCH UPŁYWA W DNIU 28.03.2014**

Zamówienia złożone po 28.03.2014r. i w trakcie sezonu 2014/2015 będą realizowane w cenach RACE, aż do wyczerpania zapasów PM Sport.

OSOBY ODPOWIEDZIALNE ZA DYNASTAR LANGE RACING 2014/2015

DYNASTAR, LANGE, KERMA

Product & Sales Manager

Robert Psiuk

r.psiuk@pmsport.com.pl

kom. +48 663 866 475

Tel. + 48 22 546 88 59

# RACE PROGRAM

## 2014 | 2015



NOWA CENA RACING  
PREORDER BRUTTO

NOWA CENA RACING  
BRUTTO PO 28 marca

SUGEROWANA CENA  
DETALICZNA

KOD	NARTY	KOD WIĄZANIA	WIĄZANIA			
<b>RACE</b>						
DRD03DJ	SPEED COURSE WC FACTORY (DADDJ02)	FCDA002	SPX 15 MAXFLEX BLUE	2 952	3 280	4 100
DRD01DJ	COURSE FIS R20 WC (DADDJ01)	FCDA002	SPX 15 MAXFLEX BLUE	2 952	3 280	4 100
DRD02DJ	COURSE FIS R20 WC (DADDJ01)	FCDA004	SPX 12 MAXFLEX BLUE	2 808	3 120	3 900
DRD01AZ	OMEGGLASS FIS R20 WC (DADAZ01)	FCDA002	SPX 15 MAXFLEX BLUE	2 952	3 280	4 100
DRD02AZ	OMEGGLASS FIS R20 WC (DADAZ01)	FCDA004	SPX 12 MAXFLEX BLUE	2 808	3 120	3 900
DRD04DA	SPEED COURSE WC R20 RAC (DACDA01)	FCDA004	SPX 12 MAXFLEX BLUE	2 304	2 560	3 200
DRD03AZ	OMEGGLASS WC R20 RACING (DADAZ02)	FCDA004	SPX 12 MAXFLEX BLUE	2 304	2 560	3 200
DRD03DA	SPEED ASSAULT R20 WC (DACDA02)	FCDA002	SPX 15 MAXFLEX BLUE	2 952	3 280	4 100
DRD02DA	SPEED ASSAULT R20 WC (DACDA02)	FCDA004	SPX 12 MAXFLEX BLUE	2 808	3 120	3 900
DRD01DB	COURSE WC PREMIUM R20 WC (DADDB01)	FCDA002	SPX 15 MAXFLEX BLUE	2 952	3 280	4 100
<b>JUNIOR</b>						
DRD03AX	TEAM OMEGLASS WC R20 PRO (DADAX01)	FCDA006	SPX 10 B73 BLUE	1 296	1 440	1 800
DRD01AX	TEAM OMEGLASS WC R20 PRO (DADAX01)	FCDA060	NX TEAM 10 B73 BLUE	1 224	1 360	1 700
DRD02AX	TEAM OMEGLASS WC R20 PRO (DADAX01)	FCDA062	NOVA TEAM 7 B73 BLUE	1 080	1 200	1 500
DRD04DY	TEAM COURSE WC R20 RAC (DACDY01)	FCDA004	SPX 12 MAXFLEX BLUE	1 512	1 680	2 100
DRD01DY	TEAM COURSE WC R20 PRO (DACDY02)	FCDA006	SPX 10 B73 BLUE	1 296	1 440	1 800
DRD02DY	TEAM COURSE WC R20 PRO (DACDY02)	FCDA060	NX TEAM 10 B73 BLUE	1 152	1 280	1 600
DRD03DY	TEAM COURSE WC R20 PRO (DACDY02)	FCDA062	NOVA TEAM 7 B73 BLUE	1 080	1 200	1 500
DRD05DY	TEAM COURSE OPEN (DACDY03)	FCDA061	NOVA TEAM 7 MAXPLATE B73 BLUE	936	1 040	1 300
DRD01AA	TEAM PRO OPEN (DADAA01)	FCDA061	NOVA TEAM 7 MAXPLATE B73 BLUE	936	1 040	1 300
DRD01BB	TEAM COMP (DACBB01)	FCDA062	NOVA TEAM 7 B73 BLUE	719	799	999
DRC02BB	TEAM COMP (DACBB01)	FCOA040	TEAM 4 B69 WHITE BLACK	575	639	799
DRC03BB	TEAM COMP XPRESS (DACBB02)	FC2D055	XPRESS TEAM B73 BLUE	792	880	1 100

PROMIEN SKRĘTU

## RACE EXPERT WC

COURSE FIS R20 RACING	DADDJ01	długość	183	188	190		
		promień	30	30	35		
SPEED COURSE WC FACTORY	DADDJ02	długość	195				
		promień	35				
COURSE WC R20 RACING	DACDA01	długość	170	175	182		
		promień	19	23	25		
ASSAULT R20 WC	DACDA02	długość	170	175	182	185	
		promień	19	23	25	27	
COURSE WC R20 PREMIUM	DADDB01	długość	170	175	180	185	
		promień	16	18	21	23	
OMEGGLASS WC R20 RACING	DADAZ02	długość	150				
		promień	10,8				
OMEGGLASS FIS R20 RACING	DADAZ01	długość	157	165			
		promień	11,7	12,7			

## RACE EXPERT JUNIOR

TEAM COURSE WC R20 RACING	DACDY01	długość	158	165			
		promień	18	17,9			
TEAM COURSE WC R20 PRO	DACDY02	długość	135	144	151	158	165
		promień	14,3	15,3	17,2	18	17,9
TEAM COURSE OPEN	DACDY03	długość	124	130	135	144	151
		promień	13,5	14,2	14,3	15,3	17,2
TEAM OMEGLASS WC R20 PRO	DADAX01	długość	126	132	139	146	150
		promień	8,4	9,2	10	10,6	10,9
TEAM PRO OPEN	DADAA01	długość	125	132	139	146	
		promień	7	8	9	10	

# RACE PROGRAM

## 2014 | 2015



NOWA CENA RACING  
PREORDER BRUTTO

NOWA CENA RACING  
BRUTTO PO 28 marca

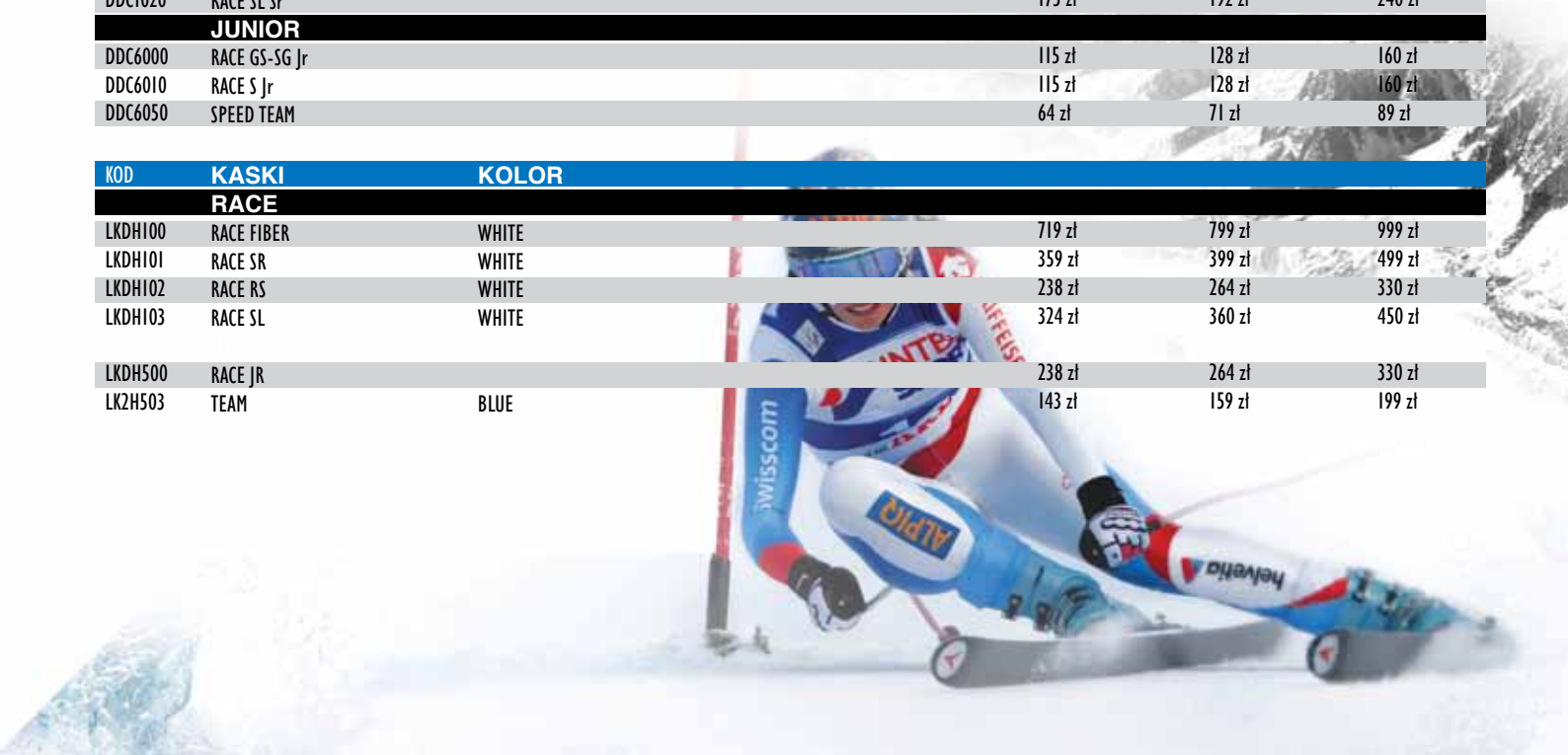
SUGEROWANA CENA  
DETALICZNA

KOD	BUTY NARCIARSKIE	KOLOR			
<b>RACE</b>					
LBD9280	WORLD CUP RP ZJ +	POWER BLUE	1 656 zł	1 840 zł	2 300 zł
LBD9290	WORLD CUP RP ZA +	POWER BLUE	1 656 zł	1 840 zł	2 300 zł
LBD9260	WORLD CUP RP ZA	POWER BLUE	1 656 zł	1 840 zł	2 300 zł
LBD9250	WORLD CUP RP ZB	POWER BLUE	1 656 zł	1 840 zł	2 300 zł
LBD9240	WORLD CUP RP ZC	POWER BLUE	1 656 zł	1 840 zł	2 300 zł
LBD1010	RS 140	POWER BLUE	1 512 zł	1 680 zł	2 100 zł
LBD1030	RS 130	POWER BLUE	1 296 zł	1 440 zł	1 800 zł
LBD1050	RS 130 WIDE	POWER BLUE	1 296 zł	1 440 zł	1 800 zł
LBD1070	RS 110	POWER BLUE	1 080 zł	1 200 zł	1 500 zł
LBD1090	RS 110 WIDE	POWER BLUE	1 080 zł	1 200 zł	1 500 zł
<b>XT SERIES</b>					
LBD7000	XT 130 L.V.	WHITE-LIME	1 440 zł	1 600 zł	2 000 zł
LBD7010	XT 130	WHITE-LIME	1 440 zł	1 600 zł	2 000 zł
LBD7030	XT 120	WHITE-LIME	1 296 zł	1 440 zł	1 800 zł
LBD7060	XT 100 L.V.	WHITE- ANTHRACITE	1 080 zł	1 200 zł	1 500 zł
LBD7080	XT 100	WHITE- ANTHRACITE	1 080 zł	1 200 zł	1 500 zł
LBD7100	XT 110 W L.V.	TR. LEMON - WHT	1 152 zł	1 280 zł	1 600 zł
LBD7120	XT 90 W	TR. BLUE - WHT	1 008 zł	1 120 zł	1 400 zł
LBD7140	XT 80 W L.V.	TR. MAGENTA-WHITE	936 zł	1 040 zł	1 300 zł
LBD7150	XT 80 W	TR. MAGENTA - WHITE	936 zł	1 040 zł	1 300 zł

KOD	BUTY NARCIARSKIE	KOLOR			
<b>JUNIOR</b>					
LBD1210	RS 120 S.C.	POWER BLUE	1 080 zł	1 200 zł	1 500 zł
LBD1310	RS 110 S.C.	POWER BLUE	936 zł	1 040 zł	1 300 zł
LBD5010	RS 90 S.C.	POWER BLUE	792 zł	880 zł	1 100 zł
LBD5030	RS 70 S.C.	POWER BLUE	719 zł	799 zł	999 zł
LBD5120	RSJ 65	POWER BLUE	475 zł	528 zł	660 zł
LBD5140	RSJ 60	POWER BLUE	359 zł	399 zł	499 zł
LBD5170	RSJ 50	POWER BLUE	287 zł	319 zł	399 zł

KOD	KIJE NARCIARSKIE				
<b>RACE</b>					
DDD1000	RACE ALU - KEVLAR		359 zł	399 zł	499 zł
DDD1010	RACE CARBON		252 zł	280 zł	350 zł
DDC1000	RACE DH SR		173 zł	192 zł	240 zł
DDC1010	RACE GS-SG SR		173 zł	192 zł	240 zł
DDC1020	RACE SL Sr		173 zł	192 zł	240 zł
<b>JUNIOR</b>					
DDC6000	RACE GS-SG Jr		115 zł	128 zł	160 zł
DDC6010	RACE S Jr		115 zł	128 zł	160 zł
DDC6050	SPEED TEAM		64 zł	71 zł	89 zł

KOD	KASKI	KOLOR			
<b>RACE</b>					
LKDH100	RACE FIBER	WHITE	719 zł	799 zł	999 zł
LKDH101	RACE SR	WHITE	359 zł	399 zł	499 zł
LKDH102	RACE RS	WHITE	238 zł	264 zł	330 zł
LKDH103	RACE SL	WHITE	324 zł	360 zł	450 zł
LKDH500	RACE JR		238 zł	264 zł	330 zł
LKZH503	TEAM	BLUE	143 zł	159 zł	199 zł



# RACE PROGRAM

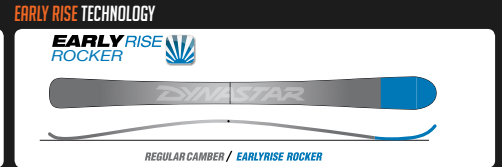
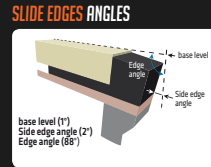
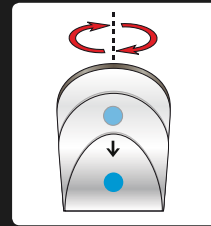
## 2014 | 2015



		NOWA CENA RACING PREORDER BRUTTO	NOWA CENA RACING BRUTTO PO 28 marca	SUGEROWANA CENA DETALICZNA
<b>KOD</b>	<b>GOGLE</b>			
	<b>RACE</b>			
LKDG100	RACE	187 zł	208 zł	260 zł
LKDG101	RACE RS	215 zł	239 zł	299 zł
LKDG102	RACE JR	130 zł	144 zł	180 zł
<b>KOD</b>	<b>OCHRONA</b>			
	<b>RACE</b>			
LKDP100	TIBIA PROTECTION	287 zł	319 zł	399 zł
LKDP101	TIBIA PROTECTION JR	252 zł	280 zł	350 zł
DKDP100	INTEGRAL HAND PROTECTION	122 zł	136 zł	170 zł
LKDP102	BOOT PROTECTOR	130 zł	144 zł	180 zł
LKDP103	SLALOM CHINPROTEC	166 zł	184 zł	230 zł
LKDP104	DESCENTE CHINPROTEC	166 zł	184 zł	230 zł
LK2P100	FOAM BACK PROTEC	287 zł	319 zł	399 zł
<b>KOD</b>	<b>BAGAŻ</b>			
	<b>RACE</b>			
DKCB100	CARGO BAG	431 zł	479 zł	599 zł
DKCB101	TRAVEL BAG	382 zł	424 zł	530 zł
DKCB102	CABIN BAG	346 zł	384 zł	480 zł
DKCB103	2/3 PAIR WHEEL BAG	431 zł	479 zł	599 zł
DKCB104	2 PAIRS 195 CM	173 zł	192 zł	240 zł
DKCB010	L2 SKI STRAP	21 zł	23 zł	29 zł
	<b>ALL MOUNTAIN</b>			
DKDB100	POWER SKI BAG ADJ.160-190CM	143 zł	159 zł	199 zł
DKCB203	I P 155 CM	122 zł	136 zł	170 zł
DKCB204	I P 180 CM	122 zł	136 zł	170 zł
DKCB205	I P 195 CM	122 zł	136 zł	170 zł
DKCB402	BASIC SKI BAG 185 CM	94 zł	104 zł	130 zł
DKCB403	BASIC SKI BAG 210 CM	94 zł	104 zł	130 zł
<b>KOD</b>	<b>BAGAŻ</b>			
	<b>RACE</b>			
LKDB107	HEATED BAG	490 zł	544 zł	680 zł
LKDB100	RACER BAG	324 zł	360 zł	450 zł
LKDB101	STARTING BAG	202 zł	224 zł	280 zł
LKDB106	LANGE BACKPACK SEAT	259 zł	288 zł	360 zł
LKDB103	LANGE PRO	252 zł	280 zł	350 zł
LKDB104	LANGE PRO BOOT BAG	202 zł	224 zł	280 zł
LK2B105	BASIC DUO	101 zł	112 zł	140 zł
LKDB105	MEDIUM BOOT BAG	143 zł	159 zł	199 zł
LK1B104	ECO BOOT BAG	94 zł	104 zł	130 zł
LKDB102	POWER BOOT BAG	143 zł	159 zł	199 zł
<b>KOD</b>	<b>OCHRONA</b>			
	<b>RACE</b>			
DLDS01A	GIANT SUIT ADULT	1 368 zł	1 520 zł	1 900 zł
DLDS02A	SLALOM SHORT ADULT	503 zł	559 zł	699 zł
DLDS03A	SLALOM JACKET ADULT	612 zł	680 zł	850 zł
DLDS04A	SLALOM JCKT ADULT SHORT SLEEVE	612 zł	680 zł	850 zł
DLDS05A	LONGSHELL	864 zł	960 zł	1 200 zł
	<b>JUNIOR</b>			
DLDS01J	GIANT SUIT JUNIOR	1 080 zł	1 200 zł	1 500 zł
DLDS02J	SLALOM SHORT JUNIOR	359 zł	399 zł	499 zł
DLDS03J	SLALOM JACKET JUNIOR	503 zł	559 zł	699 zł

The SPEED serie is equipped with the FIS' legal and technical features, delivering maximum performance tailored to the needs of competitive athletes, veteran racers and committed skiers. The WC titanal sandwich construction and new technological racing features deliver amazing power and precision, allowing you to initiate turns with confidence and beat the clock.

The piste versions are distinguished by their flexibility and pronounced sidecuts, creating a perfect balance of grip, stability and ease of use, and explaining their strong performance in magazine tests.



**RACE EXPERT WORLD CUP**



**OMEGLOSS WC R20 RACING** DADAZ02  
**OMEGLOSS FIS R20 WC** DADAZ01

**OMEGLOSS WC R20 RACING:**  
SIZES 150 • RADIUS 11 M • SIDE CUT CONFIDENTIAL • WEIGHT 1850 G  
KIT 1 (DRD03AZ): SPX 12 MAXIFLEX (FCDA004)

**OMEGLOSS FIS R20 WC:**  
SIZES 157 / 165 • RADIUS 13 M • SIDE CUT 119/67/103 MM • WEIGHT 2030 G  
KIT 1 (DRD01AZ): SPX 15 MAXIFLEX (FCDA002)  
KIT 2 (DRD02AZ): SPX 12 MAXIFLEX (FCDA004)



**COURSE FIS R20 RACING** DADDJ01  
**SPEED COURSE WC FACTORY** DADDJ02

**COURSE FIS R20 RACING:**  
SIZES 183 / 188 / 190 / 195 CM • RADIUS 30 M • SIDE CUT 99 / 65 / 80 MM • WEIGHT 2100 G  
KIT 1 (DRD01DJ): SPX 15 MAXIFLEX (FCDA002)  
KIT 2 (DRD02DJ): SPX 12 MAXIFLEX (FCDA004)

**SPEED COURSE WC FACTORY:**  
SIZES 195 CM • RADIUS 35 M • SIDE CUT 98 / 65 / 77 MM • WEIGHT 2380 G  
KIT 1 (DRD03DJ): SPX 15 MAXIFLEX (FCDA002)



**COURSE WC R20 RACING** DACDA01

SIZES 170 / 175 / 182 CM • RADIUS 23 M  
• SIDE CUT 105 / 68 / 89 MM • WEIGHT 2290 G  
KIT 1 (DRD04DA): SPX 12 MAXIFLEX (FCDA004)



**ASSAULT R20 WC** DACDA02

SIZES 170 / 175 / 182 / 185 / 191 CM • RADIUS 25 M •  
SIDE CUT 105 / 68 / 89 MM • WEIGHT 2315 G  
KIT 1 (DRD03DA): SPX 15 MAXIFLEX (FCDA002)  
KIT 2 (DRD02DA): SPX 12 MAXIFLEX (FCDA004)



**RACE EXPERT JUNIOR**



**TEAM COURSE WC R20 RACING** DACDY01

SIZES 158 / 165 CM • RADIUS 18 M •  
SIDE CUT 109 / 66 / 89 MM • WEIGHT 1730 G  
KIT 1 (DRD04DY): SPX 12 MAXIFLEX (FCDA004)



**TEAM COURSE WC R20 PRO** DACDY02

SIZES 135 / 144 / 151 / 158 / 165 CM • RADIUS 18 M •  
SIDE CUT 104 / 65 / 86 MM • WEIGHT 1470 G  
KIT 1 (DRD01DY): SPX 10 B73 (FCDA006)  
KIT 2 (DRD02DY): NX TERM 10 B73 (FCDA060)  
KIT 3 (DRD03DY): NOVA TERM 7 B73 (FCDA062)



**TEAM COURSE OPEN** DACDY03

SIZES 124 / 130 / 135 / 144 / 151 / 158 / 165 CM  
RADIUS 18 M • SIDE CUT 104 / 65 / 86 MM •  
WEIGHT 1210 G  
KIT 1 (DRD05DY): NOVA TERM 7 MAXIPLATE B73 (FCDA061)



**TEAM OMEGLASS WC R20 PRO** DADAX01

SIZES 126 / 132 / 139 / 146 / 150 CM • RADIUS 10 M •  
SIDE CUT 106 / 65 / 97 MM • WEIGHT 1450 G  
KIT 1 (DRD03AX): SPX 10 B73 (FCDA006)  
KIT 2 (DRD01AX): NX TERM 10 B73 (FCDA060)  
KIT 3 (DRD02AX): NOVA TERM 7 B73 (FCDA062)



# SPEED SKIS

## R20 WC (11&16MM PLATE'S HEIGHT)

CODE	STK	MODEL	RADIUS							
			28m	34m	45m	40m	45m	50m	50m	
			SIZE	186	196	205	209	212	216	218
DADYR12	RCV	SPEED SG RACING (R20 WC 16MM)								
DADY1SG	RCV	SPEED SG FIS R20WC								
DADY1DH	RCV	SPEED DH FIS R20WC "UNIVERSAL BASE"								
DADY2DH	RCV	SPEED DH FIS R20WC "HARD SNOW"								

APPROVED NEW FIS REGULATION  
More info on: [http://www.fis-ski.com/mmm/Document/documentlibrary/AlpineSkiing/04/31/04/CompetitionEquipment\\_1314\\_30.09.2013\\_clean\\_Neutral.pdf](http://www.fis-ski.com/mmm/Document/documentlibrary/AlpineSkiing/04/31/04/CompetitionEquipment_1314_30.09.2013_clean_Neutral.pdf)

### RACE EXPERT JUNIOR



**TEAM PRO OPEN** DADA001

**SIZES** 125 / 132 / 139 / 146 CM • **RADIUS** 10 M • **SIDE CUT** 115 / 65 / 99 MM • **WEIGHT** 1480 G  
**KIT 1 (DRD01AA)**: NOVA TEAM 7 MAXPLATE B73 (FCDA061)

**SPEC.**

- WOOD FIBER
- FRANCE GARANTIE



**TEAM ASSAULT WC R20 PRO** DACDY04

**SIZES** 135 / 144 / 151 / 158 / 165 CM • **RADIUS** 18 M • **SIDE CUT** 104 / 65 / 86 MM • **WEIGHT** 1470 G  
**KIT 1 (DRD06DV)**: NX TEAM 10 B73 (FCDA060)  
**KIT 2 (DRD07DV)**: NOVA TEAM 7 MAXPLATE B73 (FCDA061)

**SPEC.**

- WOOD TITANAL
- SANDWICH
- WC SPRINGSLIDE
- TIP ROCKER
- FRANCE GARANTIE

### CONTROL FIT TECHNOLOGY

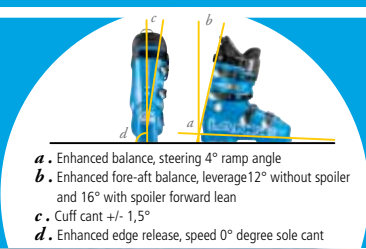
Lange builds better-fitting, better-performing ski boots with Control Fit Technology: The combination of shell last and liner execution delivers a more precise yet comfortable fit.



### NATURAL SKI STANCE

Lange boots are built with the most efficient, neutral and modern upright stance, derived from our Race Department boots.

Natural Stance compliments current ski designs by providing more efficient power transfer on shaped and rockered skis, resulting in less quad fatigue for better, longer ski days.



**RP ZA+ LBD9290**  
SIZES 22,5 - 29,5 MSS  
LAST WIDTH 92+mm  
FLEX INDEX 130

**RP ZA LBD9260**  
SIZES 22,5 - 29,5 MSS  
LAST WIDTH 92mm  
FLEX INDEX 130

**RP ZB LBD9250**  
SIZES 22,5 - 29,5 MSS  
LAST WIDTH 92mm  
FLEX INDEX 140

**RP ZC LBD9240**  
SIZES 22,5 - 29,5 MSS  
LAST WIDTH 92mm  
FLEX INDEX 160

**RP ZJ LBD9280**

**LINER** WORLD CUP FIT, LACING SYSTEM  
**TONGUE** CUSTOM TONGUE, ADJ. REAR SPOILER  
**STRAP** CAM LOCK 40mm  
**SHELL MATERIAL** POLYETHER  
**CUFF MATERIAL** POLYETHER  
**BUCKLES** EXTRUDED ALU ERGO RACE, SCREWED, 4 EASY OPEN

**SIZES** 22,5 - 29,5 MSS  
**LAST WIDTH** 92+mm  
**FLEX INDEX** 120

**WORLD CUP FIT**  
**CAM LOCK**  
**CUSTOM TONGUE**



**RS140 LBD1010**

**LINER** WCUP FIT, LACING SYSTEM  
**TONGUE** ADJUSTABLE TONGUE + CUSTOM  
CANTING +/- 1,5°  
**POWER STRAP** CAM LOCK 40mm  
**SHELL MATERIAL** POLYETHER  
**CUFF MATERIAL** POLYETHER  
**BUCKLES** ALU ERGO RACE, SCREWED, 4 EASY OPEN  
MACRO ADJUSTMENTS 2 X 6 TEETH X 3 POSITIONS

**SIZES** 24 - 30,5 MSS  
**LAST WIDTH** 97mm  
**FLEX INDEX** 140

**WORLD CUP FIT**  
**CAM LOCK**  
**CUSTOM TONGUE**



**RS130 LBD1030**  
**RS130 WIDE LBD1050**

**LINER** PRO FIT  
**TONGUE** POWER WRAP TONGUE + CUSTOM  
CANTING +/- 1,5°  
**POWER STRAP** CAM LOCK 40mm  
**SHELL MATERIAL** POLYETHER  
**CUFF MATERIAL** POLYETHER  
**BUCKLES** ALU ERGO RACE, SCREWED, 2 EASY OPEN  
MACRO ADJUSTMENTS 2 X 6 TEETH X 3 POSITIONS  
SOLES POLYURETHANE (WIDE)

**SIZES**  
**22 - 30,5 MSS (LBD1030)**  
**24 - 30,5 MSS (LBD1050)**  
**LAST WIDTH** 97mm  
**100mm (WIDE)**  
**FLEX INDEX** 130

**PRO FIT**  
**CHOOSE YOUR WIDTH**  
**CAM LOCK**  
**CUSTOM TONGUE**



**RS110 S.C. LBD1310**

**LINER** SPORT FIT, W/JR PROFILE  
**TONGUE** POWER WRAP TONGUE + CUSTOM  
CANTING +/- 1,5°  
**POWER STRAP** 40MM  
**SHELL MATERIAL** POLYURETHANE  
**CUFF MATERIAL** POLYURETHANE  
**BUCKLES** ALU ERGO RACE  
MACRO ADJUSTMENTS 2 X 6 TEETH X 3 POSITIONS

**SIZES** 21 - 28,5 MSS  
**LAST WIDTH** 97mm  
**FLEX INDEX** 110

**SPORT FIT**  
**CUSTOM TONGUE**  
**SHORT CUFF**



**RS90 S.C. LBD5010**

**LINER** JR RACE FIT  
**TONGUE** POWER WRAP TONGUE  
CANTING +/- 1,5°  
**POWER STRAP** 40MM  
**SHELL MATERIAL** POLYURETHANE  
**CUFF MATERIAL** POLYURETHANE  
**BUCKLES** ALU ERGO RACE  
MACRO ADJUSTMENTS 2 X 6 TEETH X 3 POSITIONS

**SIZES** 21 - 28,5 MSS  
**LAST WIDTH** 97mm  
**FLEX INDEX** 90

**JR RACE FIT**  
**SHORT CUFF**



**RS70 S.C. LBD5030**

**LINER** JR RACE FIT  
**TONGUE** POWER WRAP TONGUE  
CANTING +/- 1,5°  
**POWER STRAP** 28MM  
**SHELL MATERIAL** POLYURETHANE  
**CUFF MATERIAL** POLYOLEFIN  
**BUCKLES** ALU ERGO RACE  
MACRO ADJUSTMENTS 2 X 6 TEETH X 3 POSITIONS

**SIZES** 21 - 28,5 MSS  
**LAST WIDTH** 97mm  
**FLEX INDEX** 70

**JR RACE FIT**  
**SHORT CUFF**



**RSJ65 LBD5120**

**LINER** JR FIT, LASTED  
**POWER STRAP** 28mm  
**SHELL MATERIAL** POLYURETHANE  
**CUFF MATERIAL** POLYOLEFIN  
**BUCKLES** ALU ERGO JR RACE  
MACRO ADJUSTMENTS 3 POSITIONS  
SOLES POLYURETHANE

**SIZES** 19 - 27,5 MSS  
**LAST WIDTH** KIDS  
**FLEX INDEX** 65

**JR FIT**  
**ADULT NORM FROM**  
**22 UP**

**BINDINGS**



**PX 18 MAXFLEX**

FCDA001 - BLUE DIN 10/18 - WEIGHT 1725g



**SPX 15 MAXFLEX**

FCDA002 - BLUE DIN 7/15 - WEIGHT 1385g



**SPX 14 RACING**

FCDA003 - BLUE DIN 5/14 - WEIGHT 1115g



**NX 12 FLUID B80**

FCIB070 - BLUE DIN 3,5/12 - WEIGHT 1135g

**SPX 12 MAXFLEX**

FCDA004 - BLUE DIN 3,5/12 - WEIGHT 1220g



**SPX 10 B73**

FCDA006 - BLUE DIN 3/10 - WEIGHT 900g



**NX TEAM 10 B73**

FCDA060 - BLUE DIN 3/10 - WEIGHT 795g



**NOVA TEAM 7 MAXPLATE B73**

FCDA061 - BLUE DIN 2/7 - WEIGHT 880g



**NOVA TEAM 7 B73**

FCDA062 - BLUE DIN 2/7 - WEIGHT 765g



**POLES**



**RACE ARAMIDE/ALU**

DDD1000						
TUBE	DIAM	HANDLE	WRIST-STRAP	BASKET	TIP	SIZES
ALU MUFF + ARAMIDE	16/14	WORLD CUP + SL PROTECTION	WORLD CUP	NEW B-54	CARBIDE	115-140



**RACE CARBON**

DDD1010						
TUBE	DIAM	HANDLE	WRIST-STRAP	BASKET	TIP	SIZES
40% CARBON	12,7	WORLD CUP	WORLD CUP	NEW B-54	CARBIDE	115-140



**RACE DH SR**

DDC1000						
TUBE	DIAM	HANDLE	WRIST-STRAP	BASKET	TIP	SIZES
ALUMINIUM ZYCRAL	18	WORLD CUP	WORLD CUP	DH	CARBIDE	115-140



**RACE GS/SG SR**

DDC1010						
TUBE	DIAM	HANDLE	WRIST-STRAP	BASKET	TIP	SIZES
ALUMINIUM ZYCRAL	18	WORLD CUP	WORLD CUP	DH	CARBIDE	115-140



**RACE SL SR**

DDC1020						
TUBE	DIAM	HANDLE	WRIST-STRAP	BASKET	TIP	SIZES
ALUMINIUM ZYCRAL	18	WORLD CUP	WORLD CUP	COURSE S1	CARBIDE	115-140



**RACE GS/SG JR**

DDC6000						
TUBE	DIAM	HANDLE	WRIST-STRAP	BASKET	TIP	SIZES
ALUMINIUM ZYCRAL	16	DOWNHILL JR	NYLON JUNIOR	COURSE S1	CARBIDE	90-115



**RACE SL JR**

DDC6010						
TUBE	DIAM	HANDLE	WRIST-STRAP	BASKET	TIP	SIZES
ALUMINIUM ZYCRAL	16	DOWNHILL JR	NYLON JUNIOR	COURSE S2	CARBIDE	90-115





**HELMETS  
GOOGLES**



**RACE FIBER** LKDH100

SIZES 54 - 56 - 58 - 60 - 61  
WEIGHT 530 GR (58)  
CERTIFICATION CE - ASTM - FIS  
SHELL EXTERNAL FIBER  
SHELL INTERNAL E.P.S  
VENTILATION PASSIVE, INNER CHANNEL  
CHINGARD INSERTS  
FIBER, RACE FIT, NEW FIS 2013



**RACE SR** LKDH101

SIZES 54 - 56 - 58 - 60 - 61  
WEIGHT 550 GR (58)  
CERTIFICATION CE EN1077 - ASTM 2040 - FIS  
SHELL EXTERNAL A.B.S  
SHELL INTERNAL E.P.S  
VENTILATION PASSIVE, INNER CHANNEL  
CHINGARD YES  
HARD SHELL, RACE FIT, CHINGARD INCLUDED



**RACE RS** LKDH102

SIZES 54 - 56 - 58 - 60 - 61  
WEIGHT 530 GR (58)  
CERTIFICATION CE EN1077 - ASTM 2040  
SHELL EXTERNAL A.B.S  
SHELL INTERNAL E.P.S  
VENTILATION PASSIVE, INNER CHANNEL  
CHINGARD INSERTS  
HARD SHELL, RACE FIT



**RACE SL** LKDH103

SIZES 54 - 56 - 58 - 60 - 61  
WEIGHT 450 GR (58)  
CERTIFICATION CE EN1077  
SHELL EXTERNAL A.B.S  
SHELL INTERNAL E.P.P  
VENTILATION PASSIVE, INNER CHANNEL  
CHINGARD YES  
HARD SHELL, EPP, CHINGUARD INCLUDED



**RACE IR** LKDH500

SIZES 54 - 56 - 58  
WEIGHT 530 GR (56)  
CERTIFICATION CE EN1077 - ASTM 2040  
SHELL EXTERNAL A.B.S  
SHELL INTERNAL E.P.S  
VENTILATION PASSIVE, INNER CHANNEL  
CHINGARD INSERTS  
HARD SHELL, RACE FIT, JUNIOR



**RACE** LKDG100

SCREEN TYPE SINGLE LENSE, CYLINDRICAL  
SCREEN PROTECTION CAT. 0 & 1  
SCREEN COLOR YELLOW + TRANSPARENT  
+ SILVER  
FRAME P.U INJECTED  
FOAM DOUBLE + FLEECE  
STRAP DOUBLE ADJUSTMENT + SILICONE  
3 LENSES INCLUDED, CYLINDRICAL,  
INTEGRATED AIRVENTS SYSTEM, FOG BLOCK



**RACE RS** LKDG101

SCREEN TYPE SINGLE LENSE, CYLINDRICAL  
SCREEN PROTECTION CAT. 0 & 1  
SCREEN COLOR YELLOW + TRANSPARENT  
+ SILVER  
FRAME P.U INJECTED HINGES  
FOAM DOUBLE + FLEECE  
STRAP DOUBLE ADJUSTMENT + SILICONE  
3 LENSES INCLUDED, CYLINDRICAL,  
INTEGRATED AIRVENTS SYSTEM, FOG BLOCK



**RACE JR** LKDG102

SCREEN TYPE SINGLE LENSE, CYLINDRICAL  
SCREEN PROTECTION CAT. 0 & 1  
SCREEN COLOR YELLOW + TRANSPARENT  
+ SILVER  
FRAME P.U  
FOAM SINGLE  
STRAP DOUBLE ADJUSTMENT + SILICONE  
3 LENSES INCLUDED, CYLINDRICAL,  
INTEGRATED AIRVENTS SYSTEM, FOG BLOCK

**PROTECTIONS**



**INTEGRAL HAND PROTECTION**

DKDP100	
SIZE	MAIN FABRIC
TU	NYLON, ELASTOMER



**TIBIA PROTECTION**

LKDP100	
SIZE	MAIN FABRIC
TU	POLYPROPYLENE, ELASTOMER



**TIBIA PROTECTION JR**

LKDP101	
SIZE	MAIN FABRIC
TU	POLYPROPYLENE, ELASTOMER



**FOAM BACKPROTEC**  
LK2P100

Gender **UNISEX**  
SIZES AVAILABLE XS/S - S/M-M/L-XL  
MAIN FABRIC EVA - MULTI DENSITY - MULTI LAYERS AND 3D MESH

Designed to protect you in style, the Lange Back protect are made of soft and shock absorbing foam. They comply with EN-CE 1621-2 norms. The Vest Back adds a front zip, breathable and stretched fleece fabric for improved support whereas the Strap Back only features a velcro waist belt.



**BOOT PROTECTOR**  
LKDP102

Gender **UNISEX**  
SIZES AVAILABLE M-L

Protection for ski boots



**SLALOM CHINPROTEC**  
LKDP103

Gender **UNISEX**  
SIZES AVAILABLE TU  
MAIN FABRIC PAINTED BLACK METAL

Aftermarket chin protector for SL helmets.

**DESCENTE CHINPROTEC**  
LKDP104

Gender **UNISEX**  
SIZES AVAILABLE TU  
MAIN FABRIC PAINTED BLACK METAL

Aftermarket chin protector for all helmets except SL.

**SKIN SUITS**

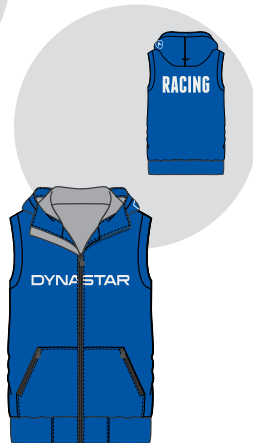


**GIANT SUIT** DLDS01A

SIZE: S / M / L / XL / XXL

**GIANT SUIT JR** DLDS01J

SIZE: 140 / 150 / 160



**HOODY MID VEST** DLDS04A

SIZE: S / M / L / XL / XXL

**HOODY MID VEST JR** DLDS04J

SIZE: XXS (150) / XS (160)

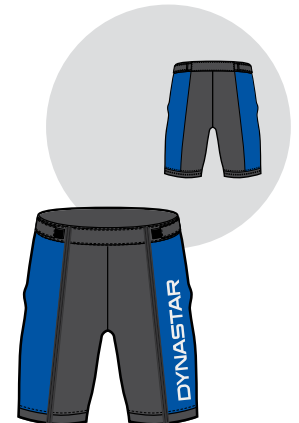


**HOODY MID JACKET** DLDS03A

SIZE: S / M / L / XL / XXL

**HOODY MID JACKET JR** DLDS03J

SIZE: XXS (150) / XS (160)



**SHORT PANT** DLDS02A

SIZE: S / M / L / XL / XXL

**SHORT PANT JR** DLDS02J

SIZE: XXS (150) / XS (160)

**BAGS**



**2/3 PAIR WHEEL BAG** DKCB103

• SPEC. •

SIZE: L1970 x W350 x H220MM  
 COMPOSITION: POLYESTER 400D/300D SMALL RIPSTOPS PVC  
 TECHNICAL FEATURES: 2/3-pair pro ski bag, two 110 mm tank wheels, reinforced bottom, side compression straps, 1 main compartment, 1 inside compartment, zippered pockets, padded handle.



**2 PAIRS 195 CM BAG** DKCB104

• SPEC. •

SIZE: L1980 x W260 x H260MM  
 COMPOSITION: POLYESTER 400D/300D SMALL RIPSTOPS PVC  
 TECHNICAL FEATURES: 2-pair pro ski bag, compression straps, padded handles, reinforced lining.



**SKI STRAP** DKCB010

• SPEC. •

SIZE: L470 x W55 x H10MM  
 COMPOSITION: EVA et velcro  
 TECHNICAL FEATURES: Velcro ski straps.



**CARGO BAG** DKCB100

• SPEC. •

SIZE: L810 x W410 x H400MM  
 COMPOSITION: POLYESTER 1200D/1200D PVC  
 TECHNICAL FEATURES: 2 separate compartments, 3 tank wheels, telescopic handle, foam handle, bag bottom ultra durable and waterproof, zippered mesh pocket.



**TRAVEL BAG** DKCB101

• SPEC. •

SIZE: L730 x W355 x H365MM  
 COMPOSITION: POLYESTER 1200D/1200D PVC  
 TECHNICAL FEATURES: 3 separate compartments, 2 tank wheels, telescopic handle, foam handle.



**CABIN BAG** DKCB102

• SPEC. •

SIZE: L560 x W330 x H300MM  
 COMPOSITION: POLYESTER 400D/300D SMALL RIPSTOPS PVC  
 TECHNICAL FEATURES: 2 separate compartments, two wheels, telescopic handle, internal organizer, two zipped front pockets.



**RACER BAG** LKDB100

LARGE CAPACITY BAG, CARRY YOUR SKI BOOTS, GOGGLES & HELMET

Very capacious bag, Rip-proof lining, two side boot compartments, Top helmet and goggle pocket, back zipper access, Adjustable padded straps, front pocket with organiser.



**STARTING BAG** LKDB101

LARGE CAPACITY

Very capacious bag, Material: 600D Polyester, Backpack straps and zippered top load. Adjustable padded straps.



**HEATED BAG** LKDB107

HEATING BAG

Material: 600D Polyester, PVC coating  
 Technical features: Pro boot backpack for race competitors, 1 main compartment for ski boots, 2 zipped side pockets for accessories, 1 front pocket for tools, padded straps and back panel, padded handle, reinforced lining.



**LANGE PRO BAG** LKDB103

Material: Ultra-resistant 600D and 1200D polyester.

Technical features: Backpack for easy transport of ski boots. Boot holders on either side of the backpack. Back panel made of foam and Dynaprotect for optimum comfort and waterproofing. Inner pocket.



**LANGE PRO BOOT BAG** LKDB104

Boot bag with shoulder straps, easy to carry with a central boot compartment and front compartment.



**LANGE BACKPACK SEAT** LKDB106

Material: Ultra-resistant 600D and 1200D polyester.  
 Technical features: Backpack for easy transport of ski boots. Back panel made of foam for optimum comfort. Inner pocket, front and side pockets. Drill pocket, Adjustable removable seat.



**MEDIUM BOOT BAG** LKDB105

Material: 600D Polyester, PVC coating  
 Technical features: Ski boot bag with side ventilation, accessory pocket, shoulder strap.



**ECO BOOT BAG** LK1B104

Material: 600D Polyester, PVC coating  
 Technical features: Ski boot bag with shoulder strap.



**BASIC BOOT BAG** LK1B200

Material: 600D Polyester, PVC coating  
 Technical features: Ski boot bag with shoulder strap.



**BASIC DUO BAG** LK2B105

Material: 600D Polyester, PVC coating  
 Technical features: Ski boot bag with shoulder strap.  
 A laptop bag? No, just the most compact boot bag on the market. Thanks to its two separated boot entries, we optimize and facilitate your boots transport.

## DYNASTAR-LOOK-LANGE RACE DEPARTMENT RECOMMANDATIONS (SKIS, BINDINGS, SKIBOOT)

General Observations: Ski selection, both model and length, will always be a very personal and, to a large degree, a very subjective decision. The following chart shows some of the common trends we noticed as a result of our ongoing testing, which should be taken into consideration when making model and length decision. Optimal ski length is determined by the following order: ability, weight and strength. The Rossignol Race Department hopes you will find this information useful and wishes you an excellent winter of racing. Good luck at the races!

	Weight (lbs)	Poids (kg)	Multi-Event Multi-Evenement	Size (cm) Taille (cm)		Bindings Fixations	Boots Chaussures	
<b>U8</b> AGE 6-7 BIRTH YEAR 2007/2008	40-50	18-23	TEAM SPEED 100-150	100		TEAM 4		
	50-60	23-27		110				
	60-70	27-32	TEAM COMP	120			RSJ 65	
	70-80	32-36		130		NOVA TEAM 7		
<b>U10</b> AGE 8-9 BIRTH YEAR 2005/2006	50-60	23-27	TEAM COMP	120		NOVA TEAM 7		
	60-70	27-32		125				
	70-80	32-36	TEAM PRO OPEN	132			RSJ 65	
	80-90	36-41		139		NOVA TEAM 7 MAXPLATE		
	90-100	41-45		146				
<b>U12</b> AGE 10-11 BIRTH YEAR 2003/2004	60-70	27-32		135			RSJ 65	
	70-80	32-36		135				
	80-90	36-41		144				
	90-100	41-45	TEAM COURSE (R20 PRO)	151 / 158	TEAM OMEGLASS WC R20 PRO	132 / 139	SPX 10 / NOVA TEAM 7	RS 70 S.C.
	100-110	45-50		158				
	110-120	50-54		165				
<b>U14</b> AGE 12-13 BIRTH YEAR 2001/2002	70-80	32-36		135 / 144			RSJ 65	
	80-90	36-41		144 / 151				
	90-100	41-45	TEAM COURSE (R20 PRO)	151 / 158			RS 70 S.C.	
	100-110	45-50		158 / 165	TEAM OMEGLASS WC R20 PRO			
	110-120	50-54		165				
	120 & +	54 & +	COURSE WC** (R20 RACING)	170			RS 90 S.C.	
<b>U16</b> AGE 14-15 BIRTH YEAR 1999/2000	90-100	41-45		158			RS 70 S.C.	
	100-110	45-50	TEAM COURSE (R20 PRO)	158 / 165	TEAM OMEGLASS WC R20 PRO	146	SPX 10	RS 90 S.C.
	110-120	50-54		165			RS 90 S.C.	
	120-130	54-59		170	OMEGLASS WC (R20 Racing)	150		RS 110 S.C.
	130-150	59-68	COURSE WC** (R20 RACING)	175 / 182	OMEGLASS WC (R20 Racing)	150 / 157	SPX 12 MAXFLEX	RS 110 S.C.
	150 & +	68 & +	COURSE WC** (R20 RACING & WC)	182/185	OMEGLASS FIS (R20 WC)	157/165	SPX 12 MAXFLEX / SPX 15 MAXFLEX	World Cup RP ZJ+
<b>FIS WOMEN</b> AGE 16 & + BIRTH YEAR (1998 & -)	100-110	45-50		183			RS 110 S.C.	
	110-120	50-54		183				
	120-130	54-59		183			SPX 12 MAXFLEX	
	130-140	59-63.5	COURSE WC (R20 WC)	183	OMEGLASS WC (R20 WC)	157		World Cup RP ZJ+
	140-150	63.5-68		188			SPX 12 MAXFLEX / SPX 15 MAXFLEX	
	150-160	68-73		188				
	160-170	73-77		188			World Cup RP ZA/ZA+	
170 & +	77 & +		188					
<b>FIS MEN</b> AGE 16 & + BIRTH YEAR (1998 & -)	100-110	45-50		190			World Cup RP ZJ+	
	110-120	50-54		190				
	120-130	54-59		190			World Cup RP ZA/ZA+	
	130-140	59-63.5	COURSE WC (R20 WC)	190	OMEGLASS WC (R20WC)	165	SPX 15 MAXFLEX / SPX 18 MAXFLEX	
	140-150	63.5-68		190				
	150-160	68-73		190/195			World Cup RP ZB	
	160-170	73-77	COURSE WC FACTORY (R20 WC)	195				
170 & +	77 & +		195					

\*born in 1997-1998 only

\*\*Second Year U16 Boys should consider use of 183 or 188, 30m GS skis based on coaches discretion

## New FIS Rules

FIS level skiers are concerned for 14/15

	LENGHT Ski length (Minimum) Ski length measurement tolerance of +/- 1cm				RADIUS Radius (Minimum)			
	WC L & M, EC L & M, COC L & M, FIS L & M	WC L & M, EC L & M	COC L & M, FIS L & M	WC L & M, EC L & M, COC L & M, FIS L & M	WC L & M, EC L & M, COC L & M, FIS L & M	WC L & M, EC L & M, COC L & M, FIS L & M	WC L & M, EC L & M, COC L & M, FIS L & M	WC L & M, EC L & M, COC L & M, FIS L & M
	2011/2012	2012/2013		2013/2014	2011/2012	2012/2013		2013/2014
DH Ladies	210**	215	210**	210**	45	50	45	50
DH Mens	215**	218	215**	218**	45	50	45	50
SG Ladies	200**	205	200**	205**	33	40	33	40
SG Mens	205**	210	205**	210**	33	45	33	45
GS Ladies	180**	188	180**	188**	23	30	23	30
GS Mens	185**	195	185**	195**	27	35	27	35
SL Ladies	155	155	155	155				
SL Mens	165	165	165	165				
GS (L & M) Minimum Profile Width					≥ 65mm	≤ 65mm	≥ 65mm	≤ 65mm SL ≤ 63mm

\*\* (- 1cm tolerance for FIS & ENL)

SKIS ROSSIGNOL S.A.S. - Société par Actions Simplifiée - Registered Capital 50.000.000 € - HQ: 98 rue Louis BARRAN - 38 430 ST JEAN DE MOIRANS (France)

Company registration: R.C.S. GRENOBLE 056 502 958

Dynastar reserves the right to modify the models shown in this document without prior notice.

Photos: KALICE.com, Agence ZOOM, Christophe Margot

Doc realisation: contact@crstof.fr

Printed in France

